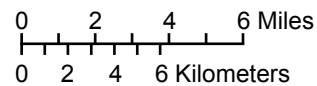
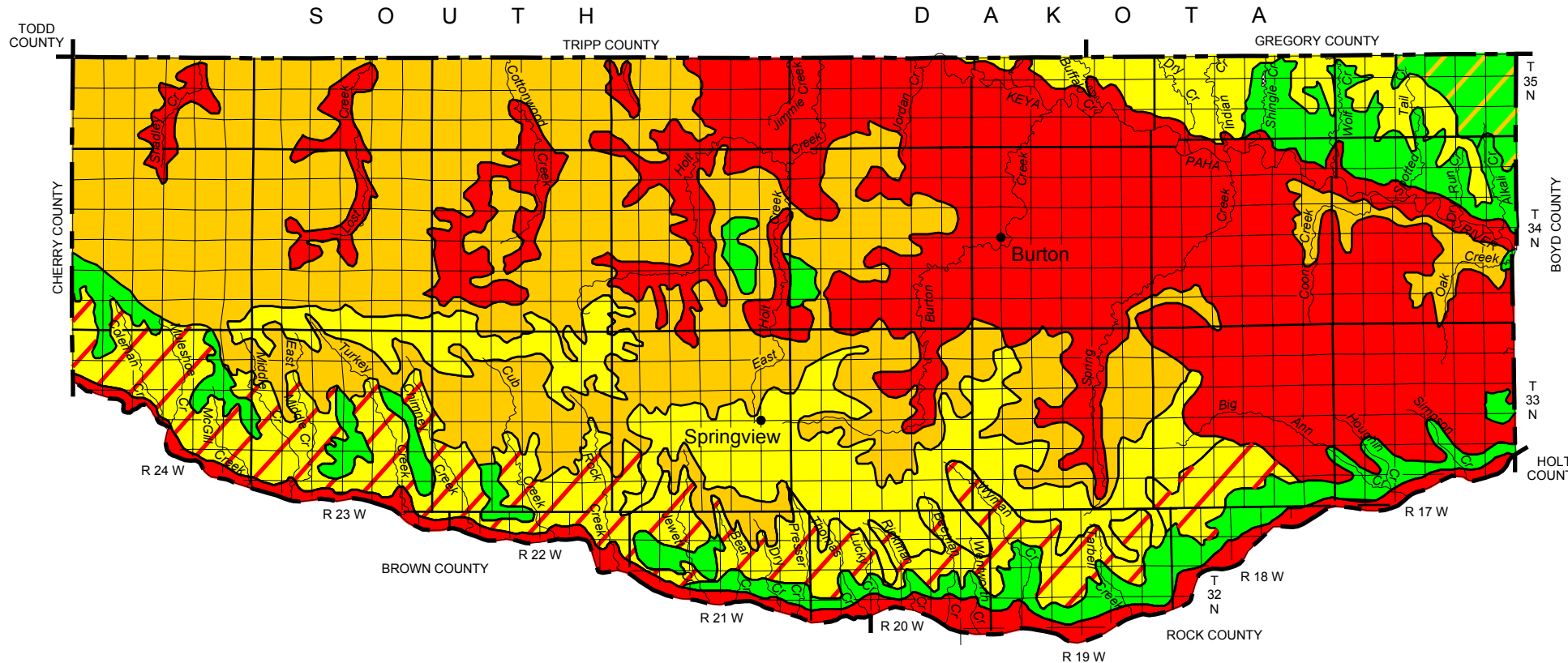


Pesticides and Groundwater

*An Applicator's Map and Guide
to Prevent Groundwater Contamination*

Keya Paha County



-  **Sand, loamy sand and sandy loam soils with little organic matter and a water table less than 30 feet below the surface.**
These areas have a high vulnerability for groundwater contamination.
-  **Sand, loamy sand and sandy loam soils with little organic matter and a water table greater than 30 feet below the surface.**
These areas have a moderate vulnerability to groundwater contamination. Even though the water table is greater than 30 feet below the surface, the soils are porous and caution should be used.
-  **Silty and loamy soils with a water table less than 30 feet below the surface.**
These areas have a moderate vulnerability to groundwater contamination. Even though the soils restrict the downward movement of pesticides, the water table is less than 30 feet below the surface and caution should be used.
-  **Generally silty and loamy soils with a water table less than 30 feet below the surface.**
Much of this area has a moderate vulnerability to groundwater contamination because the water table is less than 30 feet below the surface. Some parts have sand, loamy sand or sandy loam soils with little organic matter and high vulnerability to groundwater contamination. Extreme caution should be used in sandy areas. Caution should be used throughout the entire area.
-  **Silty and loamy soils with a water table greater than 30 feet below the surface.**
These areas have a slight vulnerability to groundwater contamination.
-  **Generally silty and loamy soils with a water table greater than 30 feet below the surface.**
Much of this area has a slight vulnerability to groundwater contamination. Some parts have sand, loamy sand or sandy loam soils with little organic matter and moderate vulnerability to groundwater contamination. Caution should be used in sandy areas.

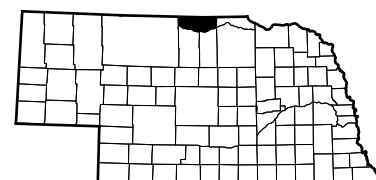
Refer to the accompanying discussion and index of pesticides for guidance on pesticide use.

The vulnerability of groundwater contamination was determined using soil properties and depth to groundwater as indicated in general on pesticide labels. Areas on this map may have dissimilar soil and groundwater characteristics from those generally identified for that area. More detailed information can be obtained from:

Resources

Soil Survey of Keya Paha County, Nebraska, 1980. USDA NRCS and Conservation and Survey Division, UNL.

Configuration of the water table, Spring 1979, O' Neill and Valentine Quadrangles, Nebraska. Conservation and Survey Division, UNL. GM-54.



County Location Map

6	5	4	3	2	1
7	8	9	10	11	12
18	17	16	15	14	13
19	20	21	22	23	24
30	29	28	27	26	25
31	32	33	34	35	36

Sectionalized Township

Conservation and Survey Division
113 Nebraska Hall
Lincoln, NE 68588-0517
(402) 472-7537
(soil and groundwater data)

Keya Paha County Extension Office
148 W 4th
Ainsworth, NE 69210-1696
(402) 387-2213
(proper pesticide use)

Nebraska Department of Agriculture
Bureau of Plant Industry - Pesticide Program
Box 94756
Lincoln, NE 68509-4756
(402) 471-2394
(pesticide labels and regulations)